



LOW CARBON LIVING
CRC

Closing the Loop: Evidence-based decision making

Christian Criado-Pérez

Master by Research

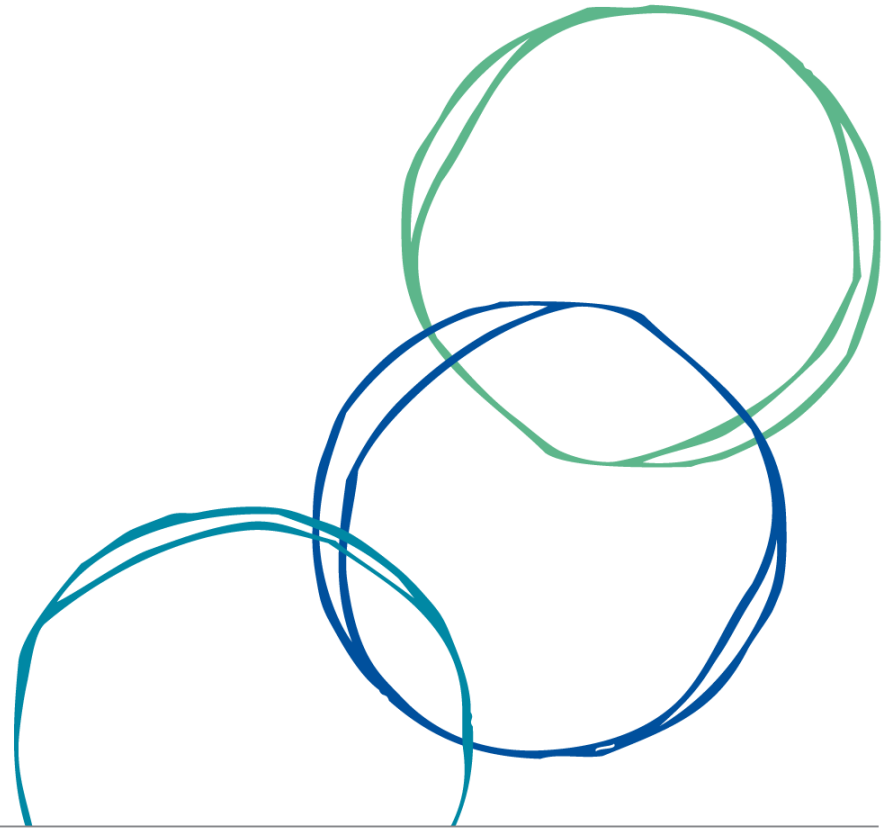
S2 2015

S2 2018

Karin Sanders & Dan Caprar

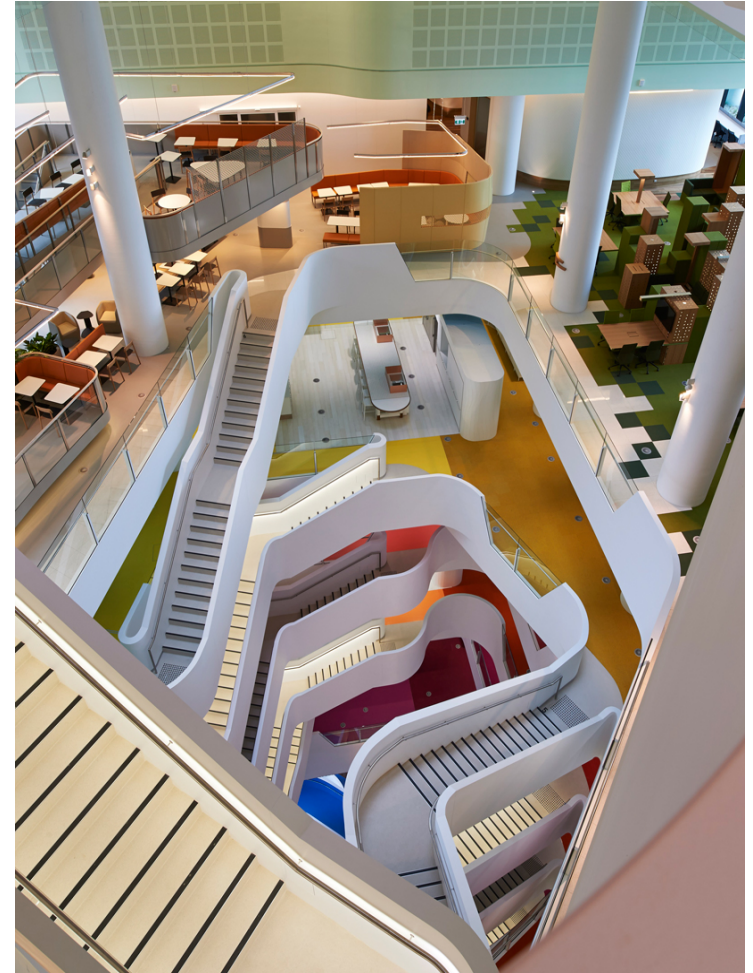
RP1009

June 2016



Research Questions

- What are the conditions that explain the use of Evidence-Based Management (EBM)
- What are the current sources of evidence used by decision makers
- What is their attitude, perceived ability and normative beliefs regarding EBM



Research Objectives

Connect the relevant body of knowledge to the decision makers impacting the design of office buildings by:

- Collecting information on the current awareness and use of research findings
- Creating a model that explains the conditions under which EBM takes place
- Setting the baseline for a future study that will examine the efficacy of future interventions to increase the practice of EBM



Research Framework

Quantitative data collection:

- Test proposed model by collecting data via surveys and analyze using Structural Equation Modeling

Qualitative data collection:

- Interviews of key stakeholders
- Observational data of projects involving our industry partners

Research Challenges

Sample size:

To test the model over 200 responders will be required (2 waves to test interventions efficacy)

Variance in EBM

Lack of an established measure/scale of EBM

Access to key meetings for relevant observational data

Outcomes/Innovation/Impacts

The project aims to help connect the relevant body of knowledge (Systematic Review in process) to the decision makers impacting the design of office buildings by:

- First mapping of decision makers use and attitude regarding research findings
- Identification of barriers to EBM in the building industry
- Targeted intervention to increase informed decision-making and efficacy assessment.